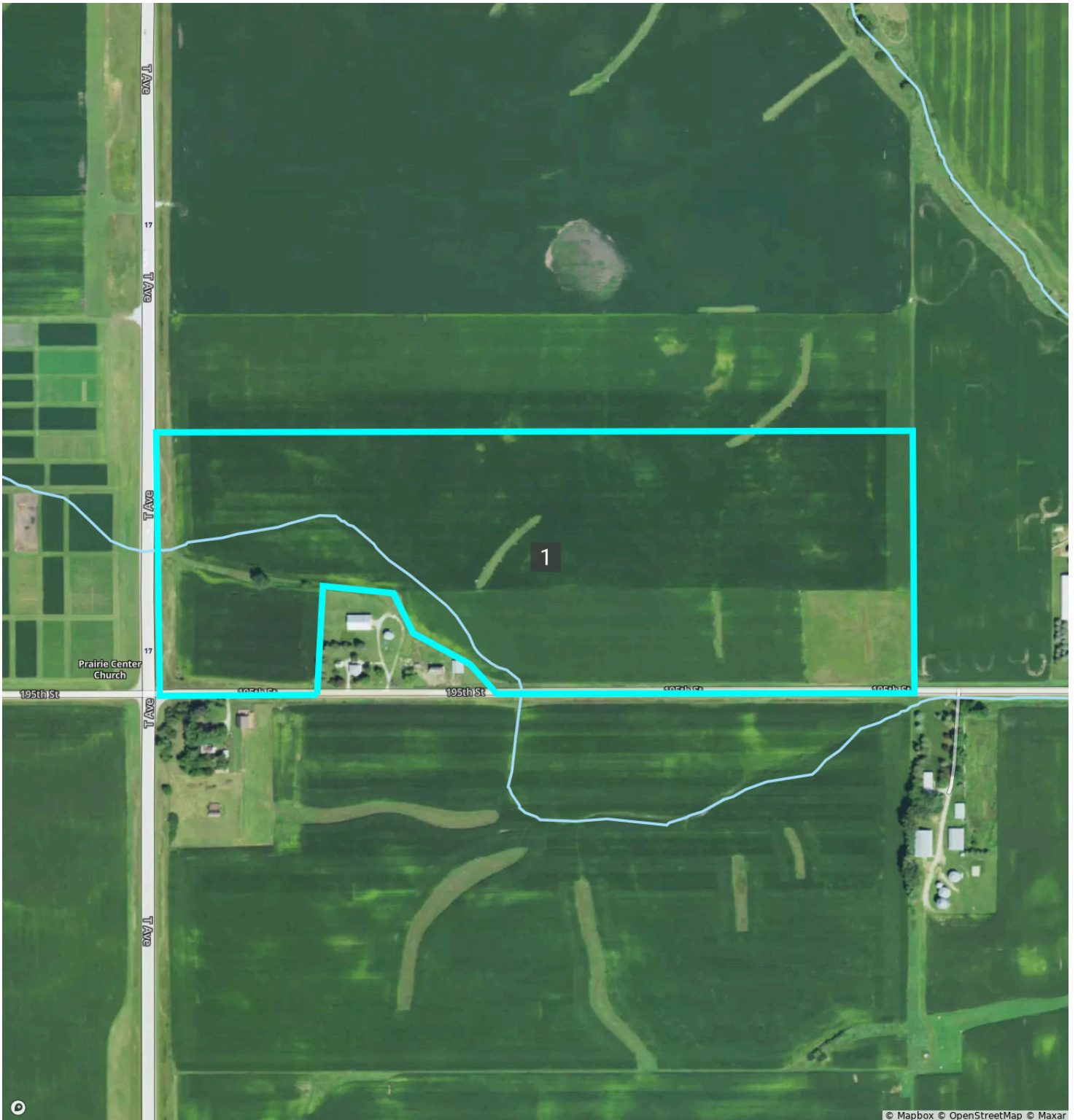


Overview



Boone, IA • Township: Jackson • Location: 20-84N-25W

52.17 acres, 1 selection

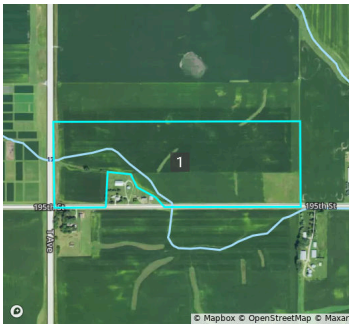


Overview 52.17 acres, 1 selection



Boone, IA • Township: Jackson • Location: 20-84N-25W

Type: Custom Boundary



Acres
52.17

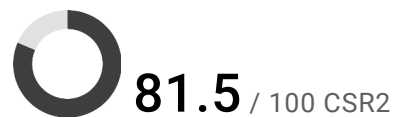
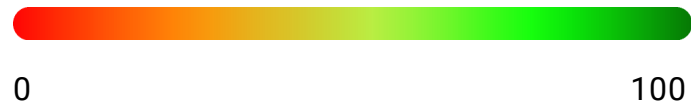
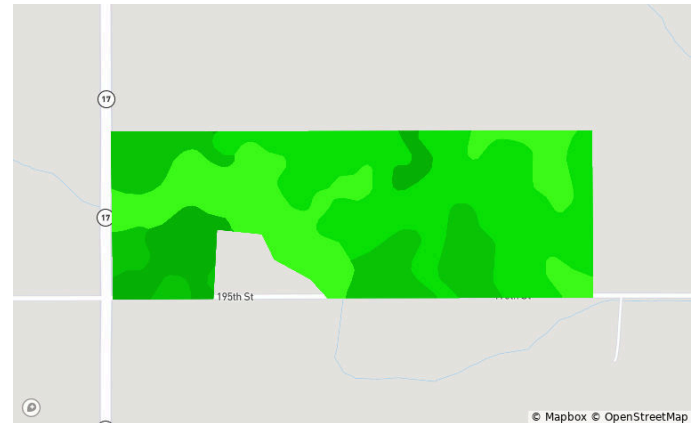
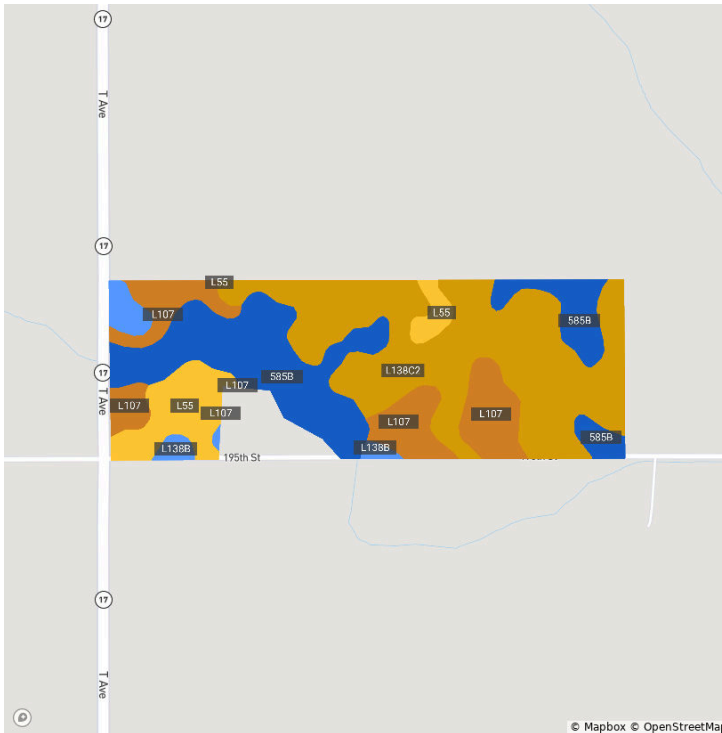
Lat. Long.
42.0727, -93.7908

Soils



Boone, IA • Township: Jackson • Location: 20-84N-25W

52.17 acres, 1 selection



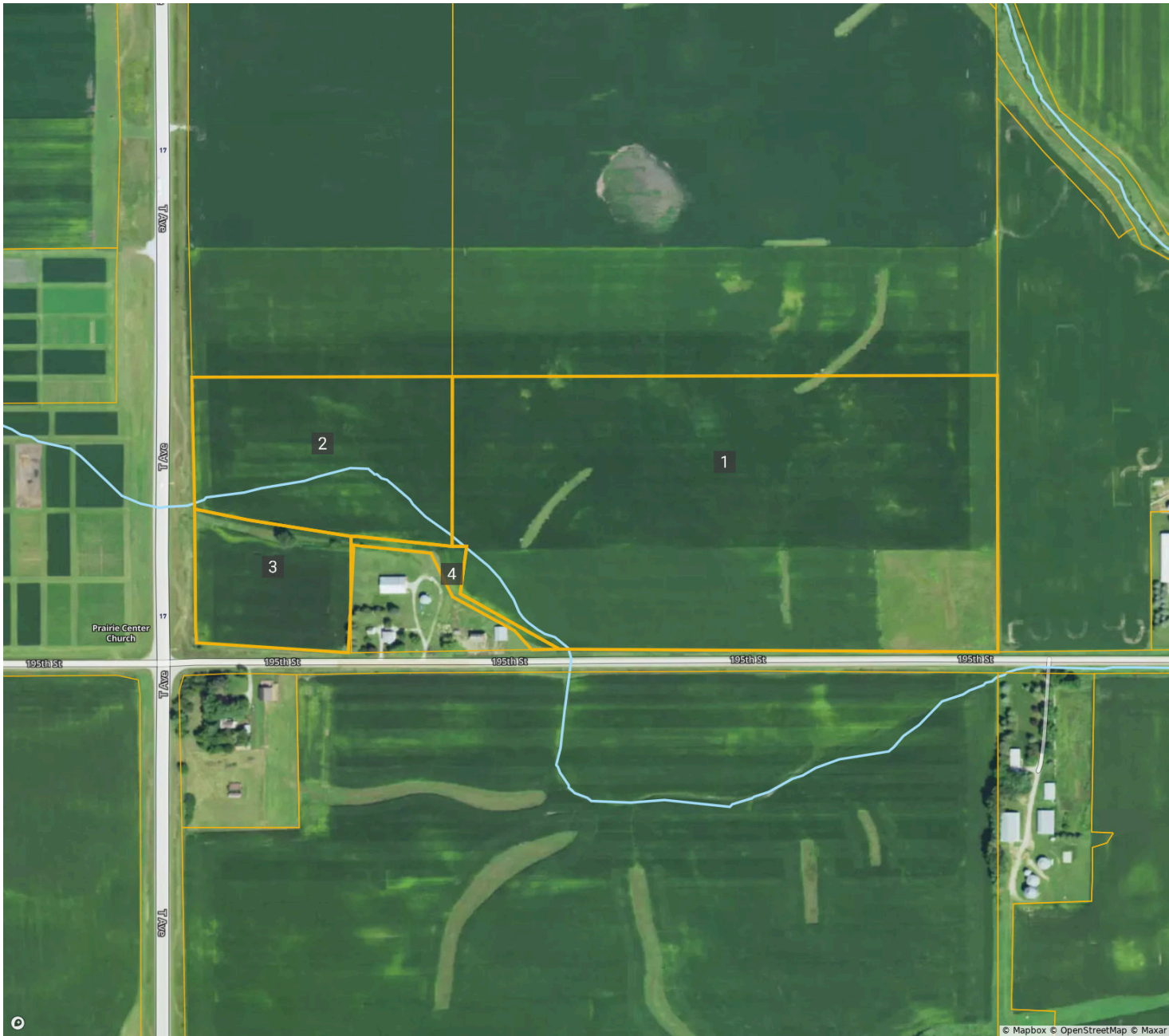
Code	Soil Description	Acres	% of Field	Non-IRR Class	IRR Class	CSR2
L138C2	Clarion loam, Bemis moraine, 6 to 10 percent slopes, moderately eroded	22.7	43.4%	3e	—	83.0
585B	Coland-Spillville complex, 2 to 5 percent slopes	14.2	27.3%	2w	—	71.0
L107	Webster clay loam, Bemis moraine, 0 to 2 percent slopes	8.4	16.1%	2w	—	88.0
L55	Nicollet loam, 1 to 3 percent slopes	5.0	9.7%	—	—	91.0
L138B	Clarion loam, Bemis moraine, 2 to 6 percent slopes	1.8	3.5%	2e	—	88.0

FSA Overview



Boone, IA • Township: Jackson • Location: 20-84N-25W

52.17 acres, 1 selection



CLU		Acres	CLU		Acres
1		34.20	4		0.65
2		9.31			
3		4.52			