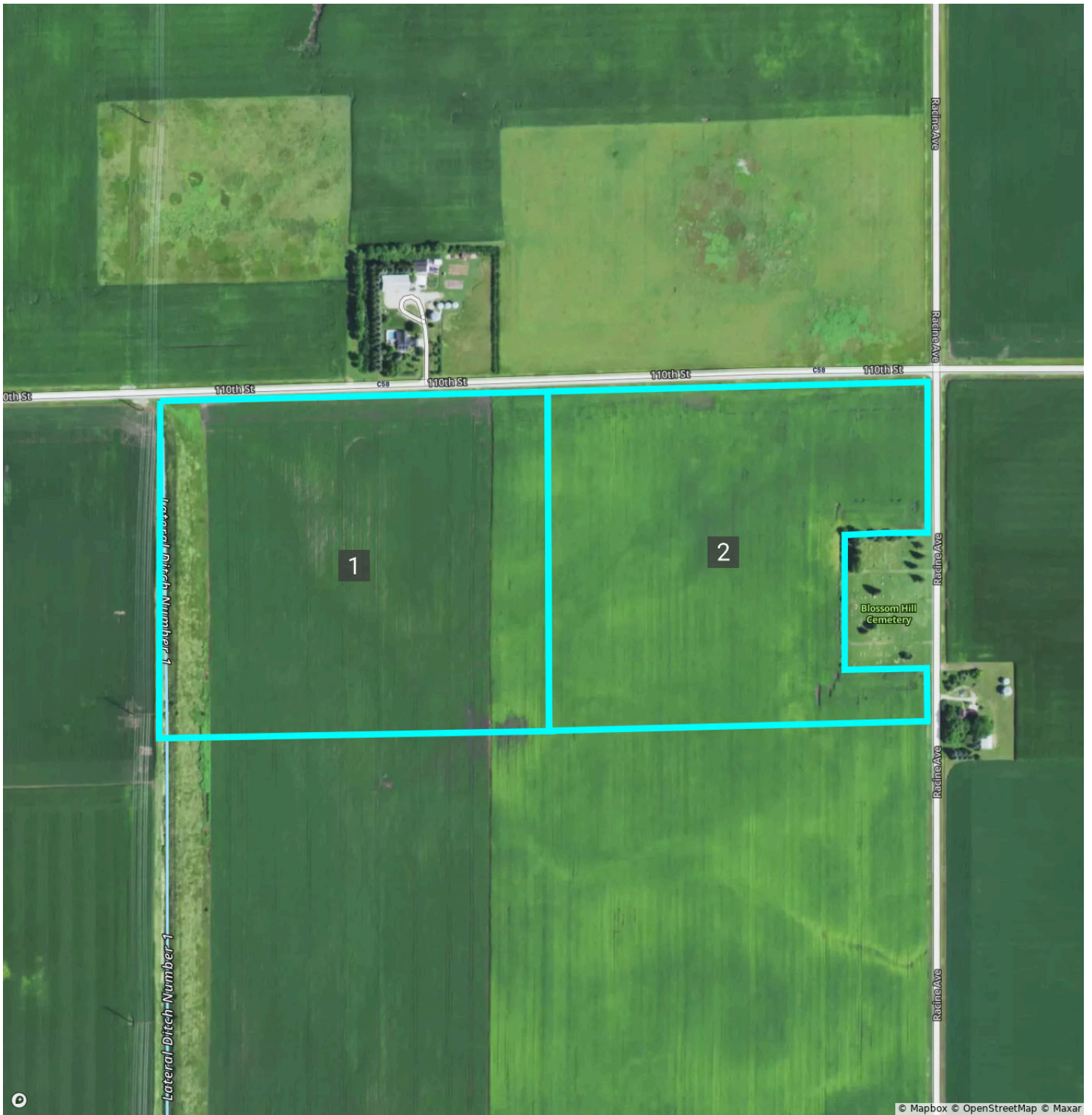


# Overview

Webster, IA • Township: Badger • Location: 11-90N-28W

65.53 acres, 2 selections



# Overview 65.53 acres, 2 selections

Webster, IA • Township: Badger • Location: 11-90N-28W

Type: Custom Boundary



**Acres**  
34.62

**Lat. Long.**  
42.6288, -94.1170

---

Webster, IA • Township: Badger • Location: 11-90N-28W

Type: Custom Boundary



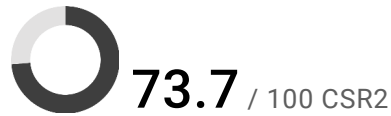
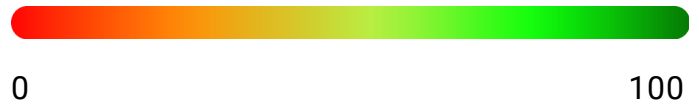
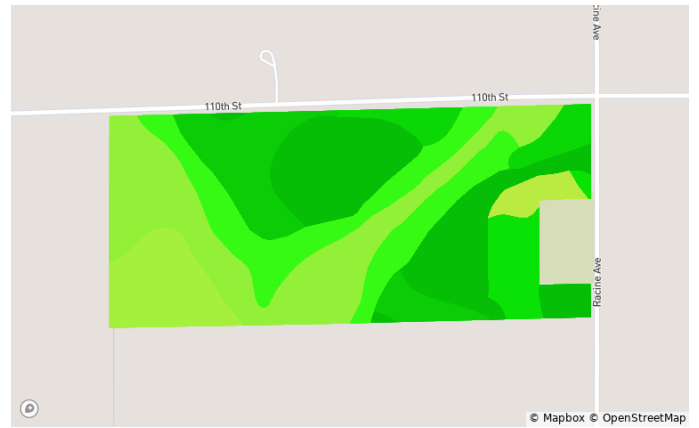
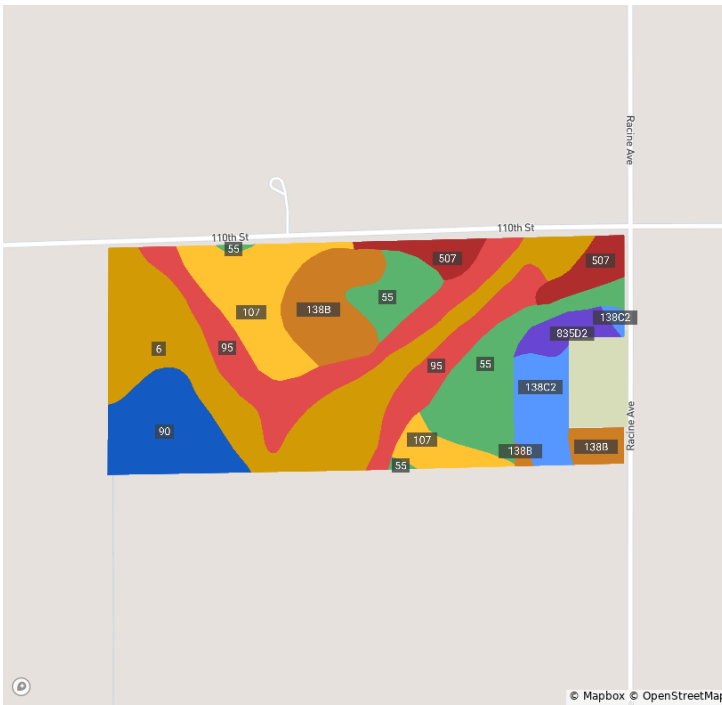
**Acres**  
30.91

**Lat. Long.**  
42.6284, -94.1127

# Soils

Webster, IA • Township: Badger • Location: 11-90N-28W

65.53 acres, 2 selections

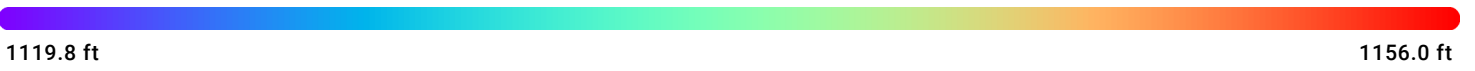
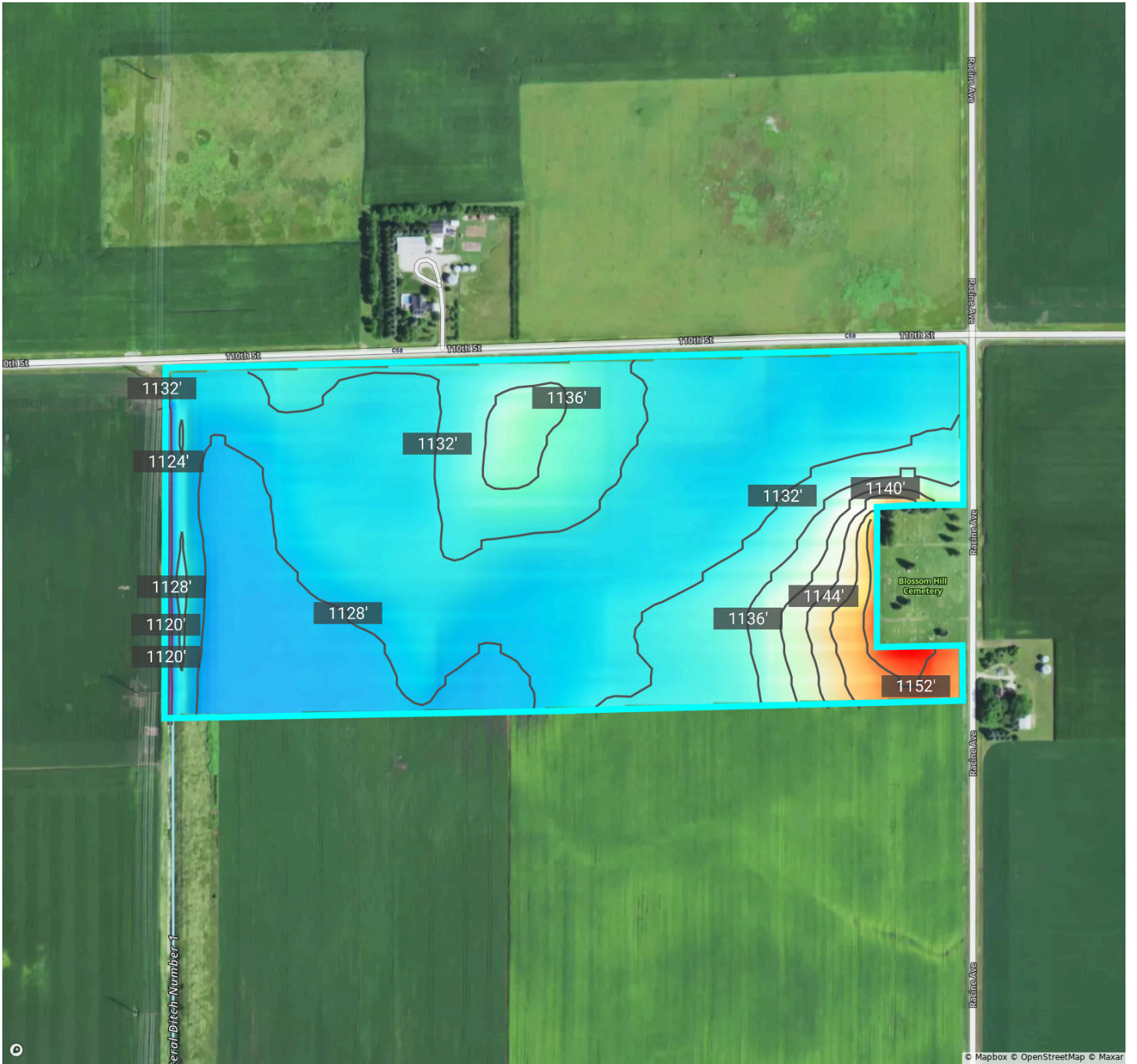


Code	Soil Description	Acres	% of Field	Non-IRR Class	IRR Class	CSR2
6	Okoboji silty clay loam, 0 to 1 percent slopes	16.3	24.9%	3w	—	59.0
95	Harps clay loam, 0 to 2 percent slopes	11.7	17.9%	2w	—	72.0
55	Nicollet clay loam, 1 to 3 percent slopes	9.1	13.9%	—	—	89.0
107	Webster clay loam, 0 to 2 percent slopes	7.7	11.8%	2w	—	86.0
138B	Clarion loam, 2 to 6 percent slopes	6.3	9.6%	2e	—	89.0
90	Okoboji mucky silty clay loam, depressional, 0 to 1 percent slopes	6.0	9.1%	3w	—	56.0
138C2	Clarion loam, 6 to 10 percent slopes, moderately eroded	3.6	5.5%	3e	—	83.0
507	Canisteo clay loam, 0 to 2 percent slopes	3.2	4.9%	2w	—	84.0
835D2	Omsrud-Storden complex, 10 to 16 percent slopes, moderately eroded	1.6	2.4%	4e	—	53.0

# Elevation

Webster, IA • Township: Badger • Location: 11-90N-28W

65.53 acres, 2 selections



Source: USGS 3 Meter Dem

Interval: 4.0 ft

Range: 36.2 ft

Min: 1119.8

Max: 1156.0

# Crop History

Webster, IA • Township: Badger • Location: 11-90N-28W

65.53 acres, 2 selections

2023



2022



2021



2020



2019



2018



# Crop History

Webster, IA • Township: Badger • Location: 11-90N-28W

65.53 acres, 2 selections

## All Selections



Crop	2023	2022	2021	2020	2019	2018
Corn	55.4%	37.6%	56.1%	38.0%	56.4%	35.2%
Soybeans	37.6%	55.7%	37.3%	56.1%	38.0%	51.2%
Grassland/Pasture	4.9%	3.1%	3.8%	1.7%	2.8%	4.2%
Developed/Open Space	2.1%	2.1%	2.1%	2.1%	2.1%	9.4%
Other	0.0%	1.4%	0.7%	2.1%	0.7%	0.0%

# Vegetation Index (NDVI)

Webster, IA • Township: Badger • Location: 11-90N-28W

65.53 acres, 2 selections

2023



2022



2021



2020



2019



2018



# Vegetation Index (NDVI)

Webster, IA • Township: Badger • Location: 11-90N-28W

65.53 acres, 2 selections

Year	2023	2022	2021	2020	2019	2018
Standard Deviation	3	3	5	3	3	4
Mean	90	92	93	90	89	80
Min	52	72	65	61	55	44
Max	96	97	100	99	94	85



# Flood (FEMA Report)

Webster, IA • Township: Badger • Location: 11-90N-28W

65.53 acres, 2 selections



## Flood Hazard Zone

	% of Selection	Acres
<span style="color: yellow;">●</span> 100 Year Flood Zone (1% annual chance of flooding)	0.8%	0.6
<span style="color: cyan;">●</span> 500 Year Flood Zone (0.2% annual chance of flooding)	0.0%	0.0
<span style="color: purple;">●</span> Regulatory Floodway	0.0%	0.0
<span style="border: 1px solid black; border-radius: 50%; width: 10px; height: 10px; display: inline-block;"></span> No Flood Hazard Zone	99.2%	65.0

## Wetlands

	% of Selection	Acres
<span style="color: red;">●</span> Assorted Wetlands	1.0%	0.6

# FSA Overview

Webster, IA • Township: Badger • Location: 11-90N-28W

65.53 acres, 2 selections



CLU	Acres
1	60.84
2	2.47
3	1.47

# Historical Imagery

Webster, IA • Township: Badger • Location: 11-90N-28W

65.53 acres, 2 selections

2023



2021



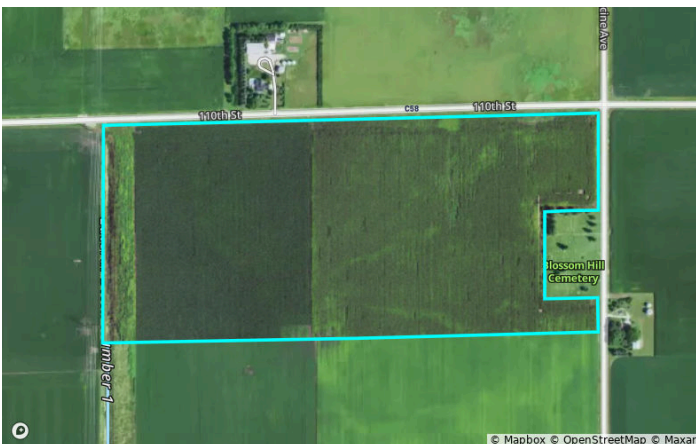
2019



2017



2015



2014

