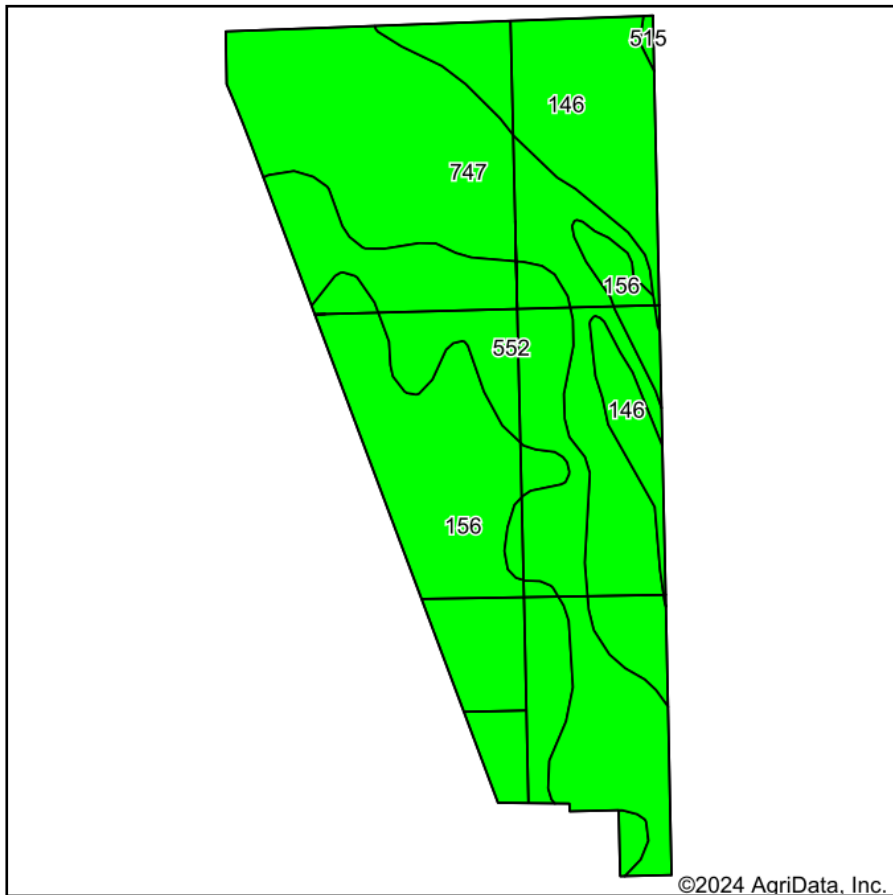
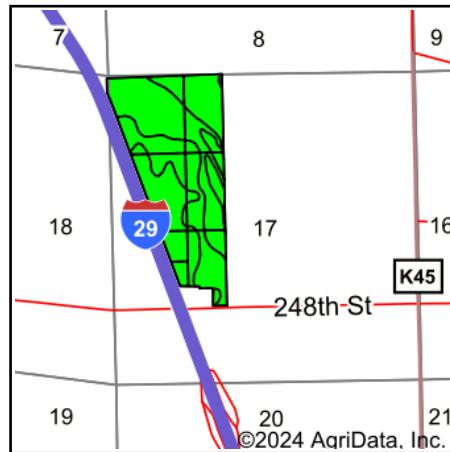


# Soils Map



Soils data provided by USDA and NRCS.



State: **Iowa**  
 County: **Monona**  
 Location: **17-83N-45W**  
 Township: **Franklin**  
 Acres: **120.16**  
 Date: **5/24/2024**



Maps Provided By:



© AgriData, Inc. 2023

www.AgriDataInc.com



Area Symbol: IA133, Soil Area Version: 35

Code	Soil Description	Acres	Percent of field	CSR2 Legend	Non-Irr Class *c	Irr Class *c	*j Corn Bu	*i Soybeans Bu	CSR2**	CSR	*n NCCPI Overall		
747	Rodney silty clay, 0 to 2 percent slopes, rarely flooded	38.56	32.1%			I	206.4	59.9	83	58	59		
156	Albaton silty clay, 0 to 2 percent slopes, rarely flooded	31.96	26.6%			IIIw	185.6	53.8	58	55	49		
552	Owego silty clay, 0 to 2 percent slopes, rarely flooded	30.28	25.2%			IIIw	185.6	53.8	66	45	51		
146	Onawa silty clay, 0 to 2 percent slopes, rarely flooded	19.11	15.9%			IIw	201.6	58.5	79	65	60		
515	Percival silty clay, 0 to 2 percent slopes, rarely flooded	0.25	0.2%			IIw	80.0	23.2	54	55	48		
<b>Weighted Average</b>							<b>2.20</b>	<b>*-</b>	<b>194.6</b>	<b>56.4</b>	<b>71.4</b>	<b>55</b>	<b>*n 54.5</b>

\*\*IA has updated the CSR values for each county to CSR2.

\*j Yield data provided by the ISPAID Database version 8.1.1 developed by IA State University.

\*n: The aggregation method is "Weighted Average using all components"

\*c: Using Capabilities Class Dominant Condition Aggregation Method

\*- Irr Class weighted average cannot be calculated on the current soils data due to missing data.