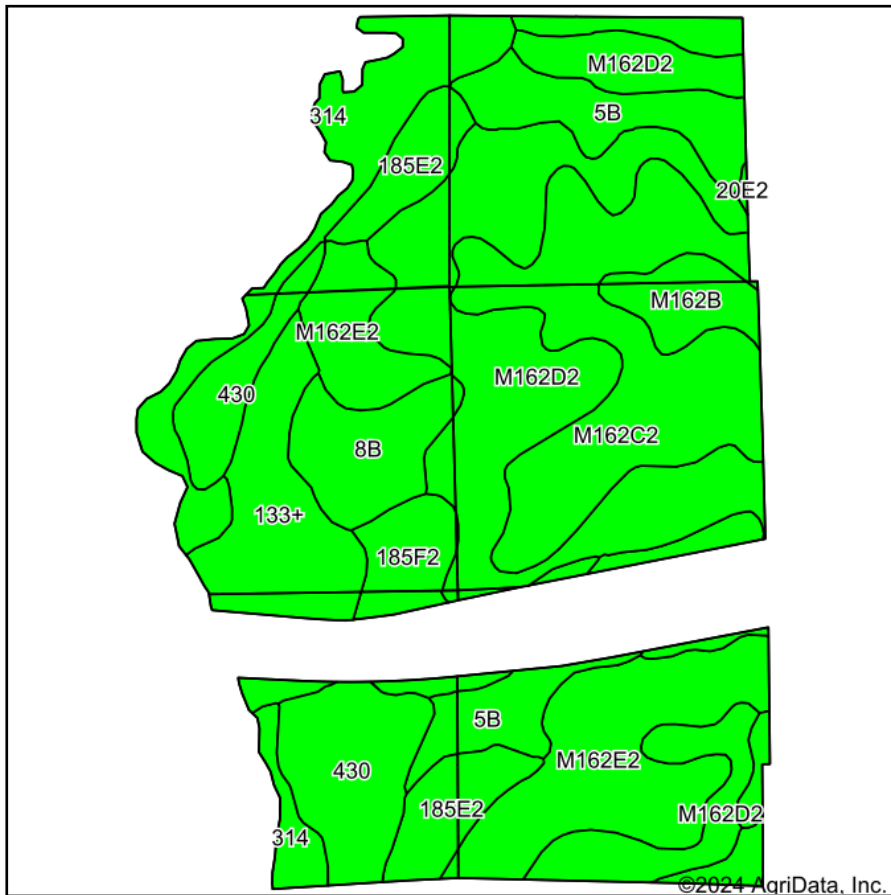
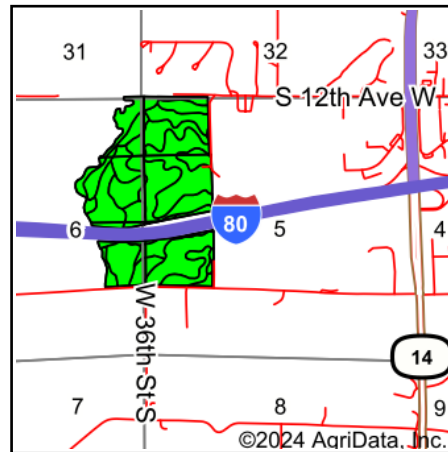


Soils Map



Soils data provided by USDA and NRCS.



State: **Iowa**
 County: **Jasper**
 Location: **5-79N-19W**
 Township: **Palo Alto**
 Acres: **167.69**
 Date: **2/23/2024**



Maps Provided By:



© AgriData, Inc. 2023

www.AgriDataInc.com



Area Symbol: IA099, Soil Area Version: 29

Code	Soil Description	Acres	Percent of field	CSR2 Legend	Non-Irr Class *c	*i Corn Bu	*i Soybeans Bu	CSR2**	CSR	*n NCCPI Overall	
M162D2	Downs silt loam, till plain, 9 to 14 percent slopes, eroded	41.63	24.8%		IVe	0.0	0.0	57		81	
M162C2	Downs silt loam, till plain, 5 to 9 percent slopes, eroded	27.42	16.4%		IIIe	0.0	0.0	82		85	
M162E2	Downs silt loam, till plain, 14 to 18 percent slopes, eroded	21.66	12.9%		IVe	0.0	0.0	45		77	
430	Ackmore silt loam, 0 to 2 percent slopes, occasionally flooded	13.49	8.0%		IIw	203.2	58.9	70	83	91	
314	Lawson-Nodaway-Colo Complex, 0 to 2 percent slopes, occasionally flooded	13.40	8.0%		IIw	80.0	23.2	77	75	89	
5B	Ackmore-Colo complex, 2 to 5 percent slopes	12.62	7.5%		IIw	200.0	58.0	77	68	89	
133+	Colo silt loam, 0 to 2 percent slopes, occasionally flooded, overwash	11.79	7.0%		IIw	204.8	59.4	78	85	82	
185E2	Bauer silt loam, 9 to 18 percent slopes, moderately eroded	8.37	5.0%		VIIe	115.2	33.4	7	7	42	
8B	Judson silty clay loam, 2 to 5 percent slopes	6.97	4.2%		IIe	230.4	66.8	84	90	77	
185F2	Bauer silt loam, 18 to 40 percent slopes, moderately eroded	5.19	3.1%		VIIe	88.0	25.5	5	5	12	
M162B	Downs silt loam, till plain, 2 to 5 percent slopes	5.02	3.0%		IIe	0.0	0.0	90		92	
20E2	Killduff silty clay loam, 14 to 18 percent slopes, eroded	0.13	0.1%		IVe	153.6	44.5	44	53	78	
Weighted Average						3.32	70.4	20.4	63.2	*-	*n 79.3

**IA has updated the CSR values for each county to CSR2.

*- CSR weighted average cannot be calculated on the current soils data, use prior data version for csr values.*i Yield data provided by the ISPAID Database version 8.1.1 developed by IA State University.

*n: The aggregation method is "Weighted Average using all components"

*c: Using Capabilities Class Dominant Condition Aggregation Method

Soils data provided by USDA and NRCS.