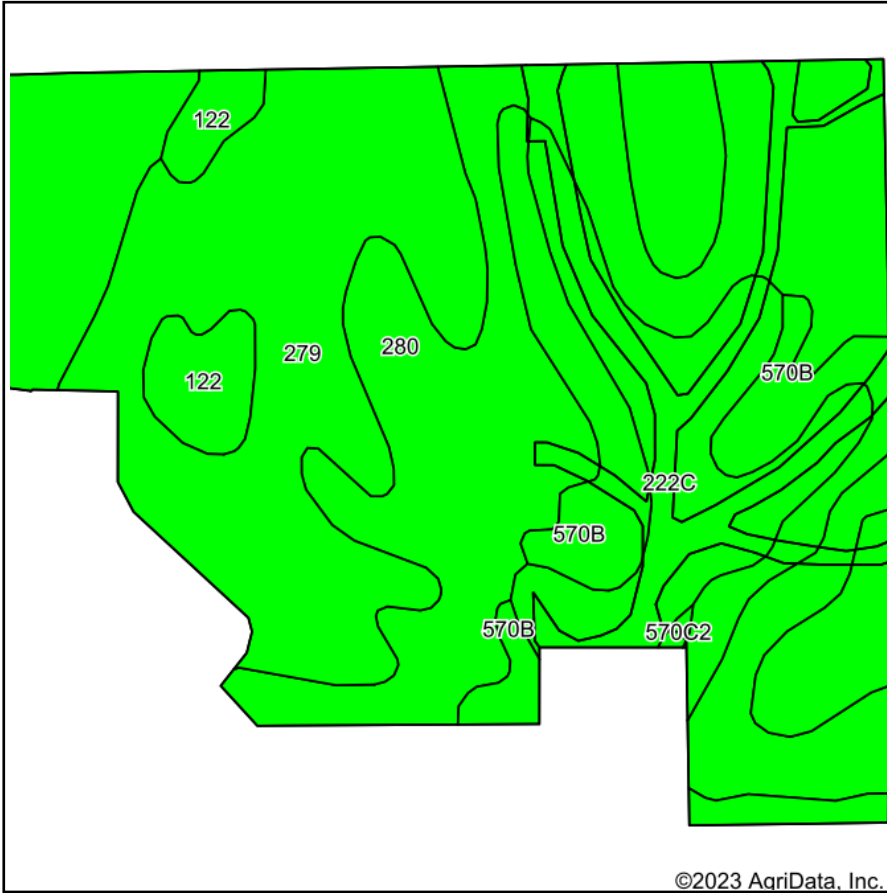
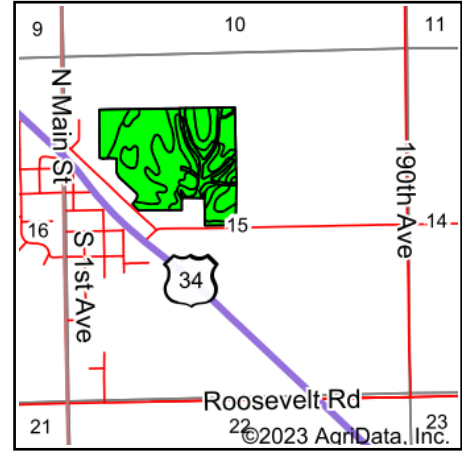


Soils Map



Soils data provided by USDA and NRCS.



State: **Iowa**
 County: **Des Moines**
 Location: **15-70N-4W**
 Township: **Danville**
 Acres: **69.83**
 Date: **11/25/2023**



Maps Provided By:



Area Symbol: IA057, Soil Area Version: 28

Code	Soil Description	Acres	Percent of field	CSR2 Legend	Non-Irr Class *c	*i Corn Bu	*i Soybeans Bu	CSR2**	CSR	*n NCCPI Overall	
280	Mahaska silty clay loam, 0 to 2 percent slopes	28.60	41.0%		Iw	230.4	66.8	94	95	87	
279	Taintor silty clay loam, 0 to 2 percent slopes	22.69	32.5%		IIw	217.6	63.1	83	88	83	
222C	Clarinda silty clay loam, 5 to 9 percent slopes	8.01	11.5%		IVw	145.6	42.2	42	30	74	
570B	Nira silty clay loam, 2 to 5 percent slopes	7.87	11.3%		Ile	208.0	60.3	80	87	96	
122	Sperry silt loam, depressional, 0 to 1 percent slopes	2.57	3.7%		IIIw	164.8	47.8	36	63	66	
570C2	Nira silty clay loam, 5 to 9 percent slopes, moderately eroded	0.09	0.1%		IIle	187.2	54.3	71	67	89	
Weighted Average						1.86	211.5	61.3	80.7	83.2	*n 84.5

**IA has updated the CSR values for each county to CSR2.

*i Yield data provided by the ISPAID Database version 8.1.1 developed by IA State University.

*n: The aggregation method is "Weighted Average using all components"

*c: Using Capabilities Class Dominant Condition Aggregation Method

Soils data provided by USDA and NRCS.