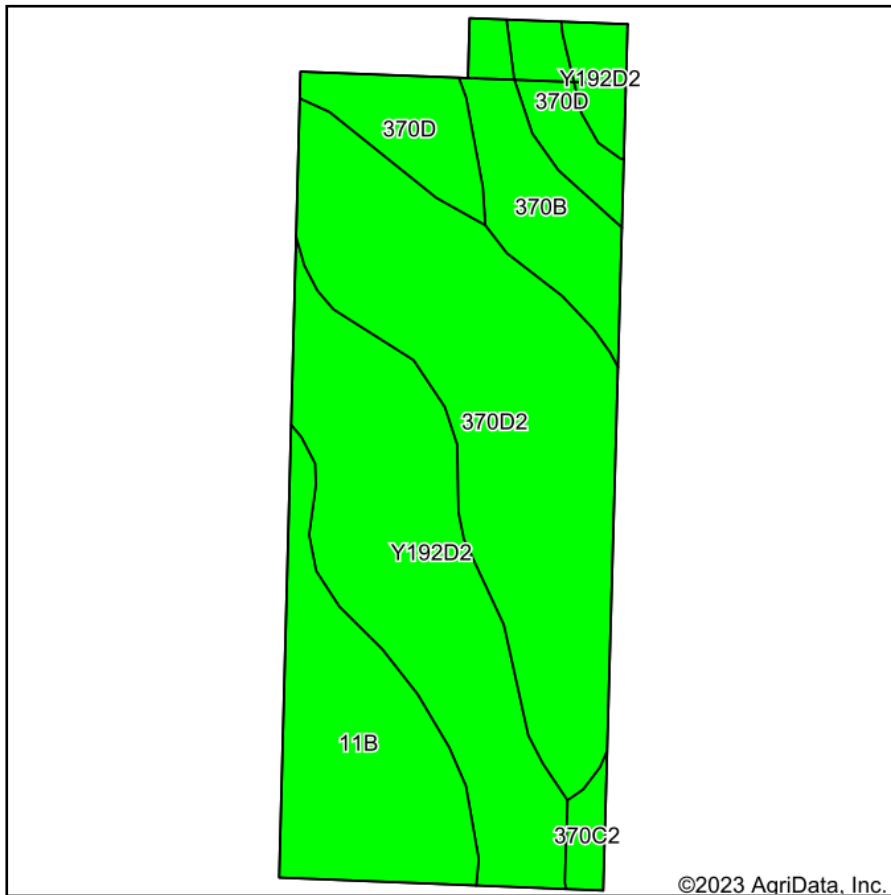
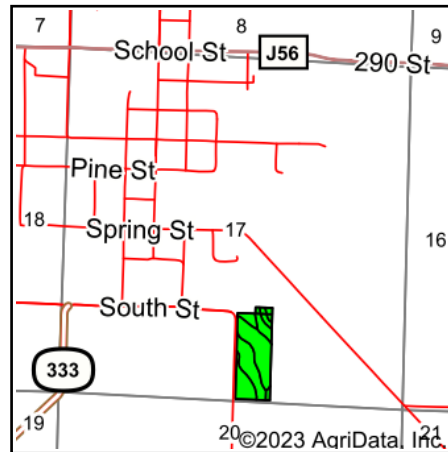


Soils Map



Soils data provided by USDA and NRCS.



State: **Iowa**
 County: **Page**
 Location: **17-67N-37W**
 Township: **Amity**
 Acres: **17.02**
 Date: **10/7/2023**



Maps Provided By:



© AgriData, Inc. 2023

www.AgriDataInc.com



Area Symbol: IA145, Soil Area Version: 26

Code	Soil Description	Acres	Percent of field	CSR2 Legend	Non-Irr Class *c	*i Corn Bu	*i Soybeans Bu	CSR2**	CSR	*n NCCPI Overall
370D2	Sharpsburg silty clay loam, 9 to 14 percent slopes, eroded	6.00	35.3%		Ille	164.8	47.8	54	55	77
Y192D2	Adair clay loam, dissected till plain, 9 to 14 percent slopes, eroded	4.83	28.4%		IVe	0.0	0.0	16		63
11B	Colo-Judson silty clay loams, 0 to 5 percent slopes, occasionally flooded	2.90	17.0%		Ilw	216.0	62.6	80	65	87
370D	Sharpsburg silty clay loam, 9 to 14 percent slopes	1.59	9.3%		Ille	185.6	53.8	59	60	85
370B	Sharpsburg silty clay loam, 2 to 5 percent slopes	1.44	8.5%		Ile	225.6	65.4	91	85	92
370C2	Sharpsburg silty clay loam, 5 to 9 percent slopes, eroded	0.26	1.5%		Ille	204.8	59.4	80	65	82
Weighted Average						3.03	134.5	39	51.6	*- *n 76.8

**IA has updated the CSR values for each county to CSR2.

*- CSR weighted average cannot be calculated on the current soils data, use prior data version for csr values.

*i Yield data provided by the ISPAID Database version 8.1.1 developed by IA State University.

*n: The aggregation method is "Weighted Average using all components"

*c: Using Capabilities Class Dominant Condition Aggregation Method

Soils data provided by USDA and NRCS.