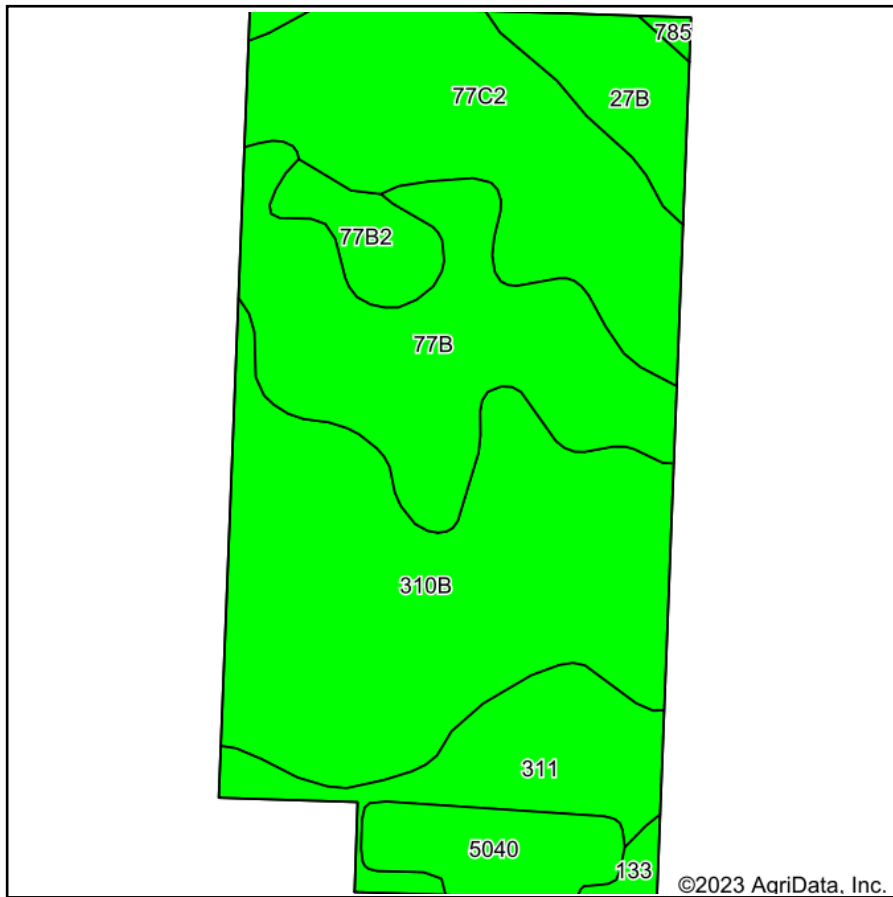
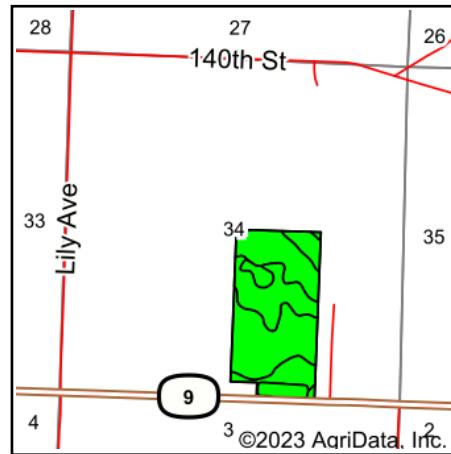


# Soils Map



Soils data provided by USDA and NRCS.



State: **Iowa**  
 County: **Lyon**  
 Location: **34-100N-43W**  
 Township: **Elgin**  
 Acres: **77.46**  
 Date: **9/7/2023**



Maps Provided By:



Area Symbol: IA119, Soil Area Version: 31

Code	Soil Description	Acres	Percent of field	CSR2 Legend	Non-Irr Class *c	*i Corn Bu	*i Soybeans Bu	CSR2**	CS R	*n NCCPI Overall	
310B	Galva silty clay loam, 2 to 5 percent slopes	26.33	34.0%		Ile	232.0	67.3	95	66	75	
77B	Sac silty clay loam, loam substratum, 2 to 5 percent slopes	16.01	20.7%		Ile	232.0	67.3	95	62	77	
77C2	Sac silty clay loam, loam substratum, 5 to 9 percent slopes, eroded	15.78	20.4%		IIle	211.2	61.2	88	45	73	
311	Galva silty clay loam, stratified substratum, 0 to 2 percent slopes	7.42	9.6%		I	240.0	69.6	100	70	75	
27B	Terril loam, 2 to 5 percent slopes	4.26	5.5%		Ile	224.0	65.0	86	63	78	
5040	Orthents, loamy	4.14	5.3%			88.0	25.5	5	5		
77B2	Sac silty clay loam, loam substratum, 2 to 5 percent slopes, eroded	2.62	3.4%		Ile	227.2	65.9	92	60	73	
133	Colo silty clay loam, deep loess, 0 to 2 percent slopes, occasionally flooded	0.66	0.9%		IIw	204.8	59.4	78	69	81	
785	Spillco loam, 0 to 2 percent slopes, occasionally flooded	0.24	0.3%		IIw	185.6	53.8	73	68	70	
<b>Weighted Average</b>						<b>*-</b>	<b>219.9</b>	<b>63.8</b>	<b>88.4</b>	<b>57.7</b>	<b>*n 71.1</b>

\*\*IA has updated the CSR values for each county to CSR2.

\*i Yield data provided by the ISPAID Database version 8.1.1 developed by IA State University.

\*n: The aggregation method is "Weighted Average using all components"

\*c: Using Capabilities Class Dominant Condition Aggregation Method

\*- Non Irr Class weighted average cannot be calculated on the current soils data due to missing data.

Soils data provided by USDA and NRCS.