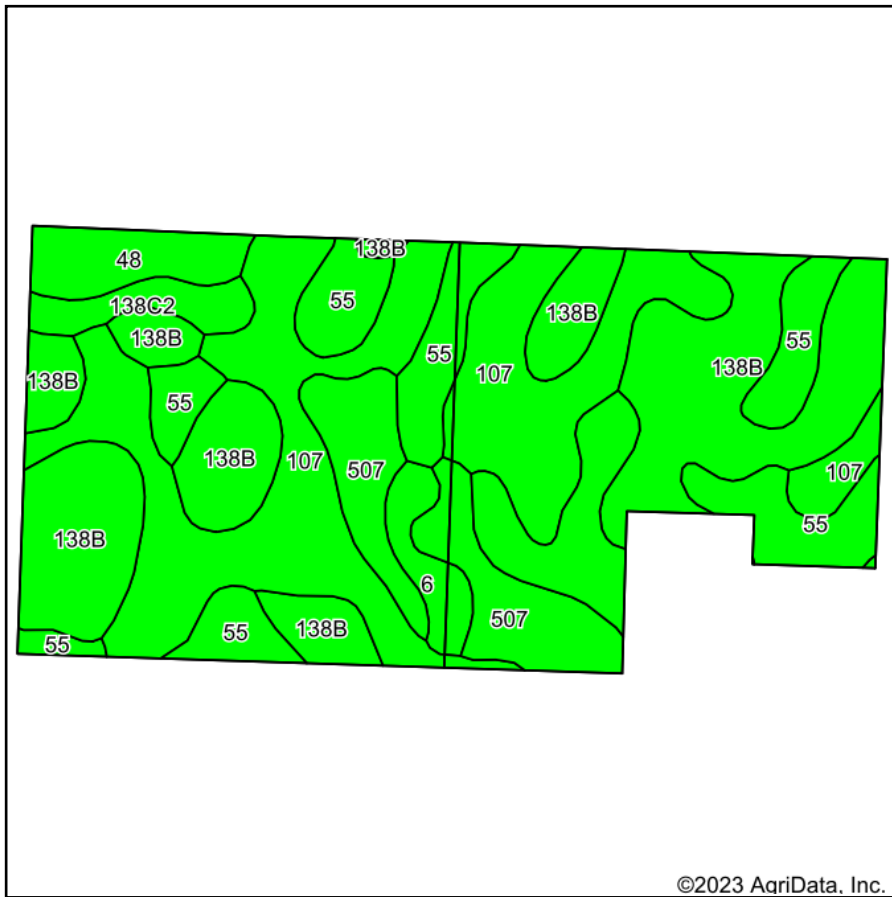
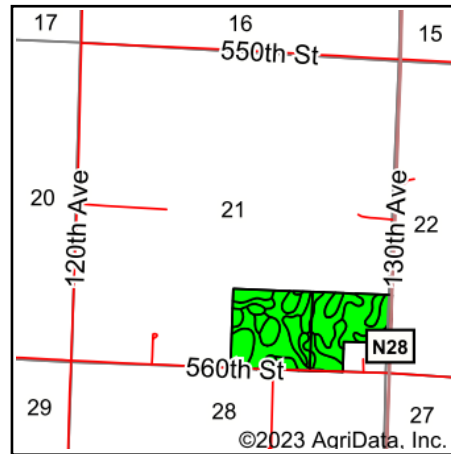


Soils Map



Soils data provided by USDA and NRCS.



State: **Iowa**
 County: **Pocahontas**
 Location: **21-91N-34W**
 Township: **Dover**
 Acres: **71.85**
 Date: **7/5/2023**



Maps Provided By:



Area Symbol: IA151, Soil Area Version: 29

| Code | Soil Description | Acres | Percent of field | CSR2 Legend | Non-Irr Class *c | *i Corn Bu | *j Soybeans Bu | CSR2** | CS R | *n NCCPI Overall | |
|-------------------------|---|-------|------------------|-------------|------------------|-------------|----------------|-------------|-------------|------------------|----------------|
| 107 | Webster clay loam, 0 to 2 percent slopes | 22.52 | 31.3% | | Ilw | 224.0 | 65.0 | 86 | 81 | 82 | |
| 138B | Clarion loam, 2 to 6 percent slopes | 21.66 | 30.1% | | Ille | 225.6 | 65.4 | 89 | 78 | 83 | |
| 55 | Nicollet clay loam, 1 to 3 percent slopes | 14.69 | 20.4% | | lw | 233.6 | 67.7 | 89 | 86 | 81 | |
| 507 | Canisteo clay loam, 0 to 2 percent slopes | 6.75 | 9.4% | | llw | 224.0 | 65.0 | 84 | 76 | 81 | |
| 48 | Knoke mucky silty clay loam, 0 to 1 percent slopes | 2.69 | 3.7% | | lllw | 177.6 | 51.5 | 56 | 53 | 76 | |
| 138C2 | Clarion loam, 6 to 10 percent slopes, moderately eroded | 1.81 | 2.5% | | llle | 204.8 | 59.4 | 83 | 62 | 70 | |
| 6 | Okoboji silty clay loam, 0 to 1 percent slopes | 1.73 | 2.4% | | lllw | 177.6 | 51.5 | 59 | 55 | 76 | |
| Weighted Average | | | | | | 1.88 | 223.1 | 64.7 | 85.5 | 78.5 | *n 81.3 |

**IA has updated the CSR values for each county to CSR2.

*i Yield data provided by the ISPAID Database version 8.1.1 developed by IA State University.

*n: The aggregation method is "Weighted Average using all components"

*c: Using Capabilities Class Dominant Condition Aggregation Method

Soils data provided by USDA and NRCS.