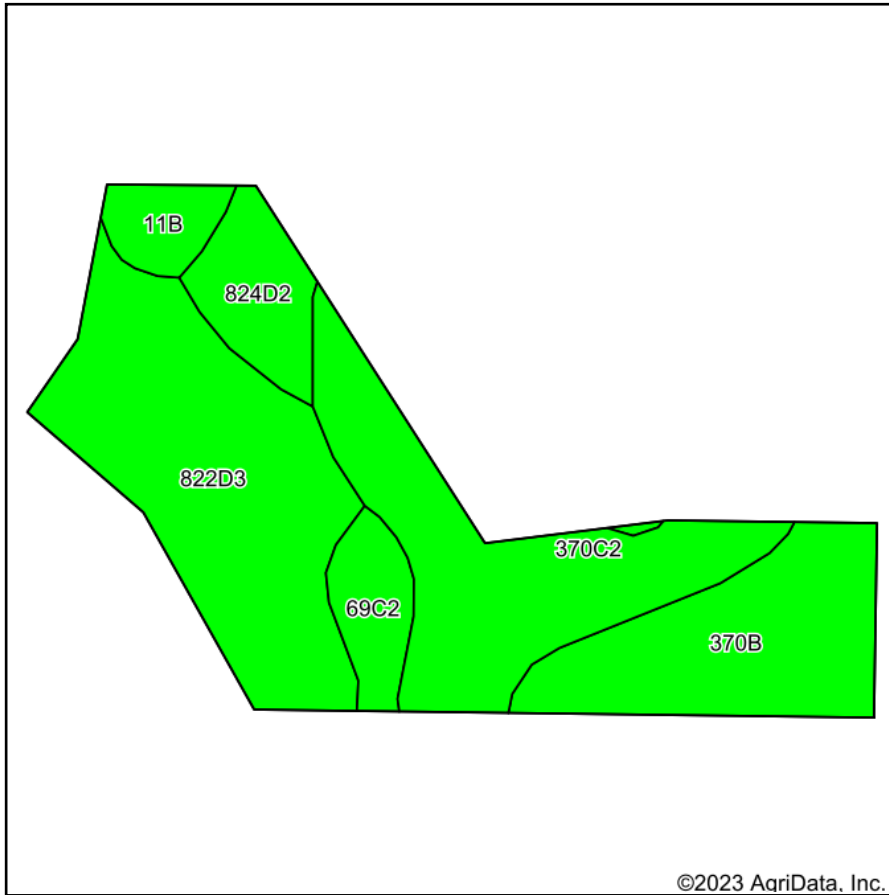
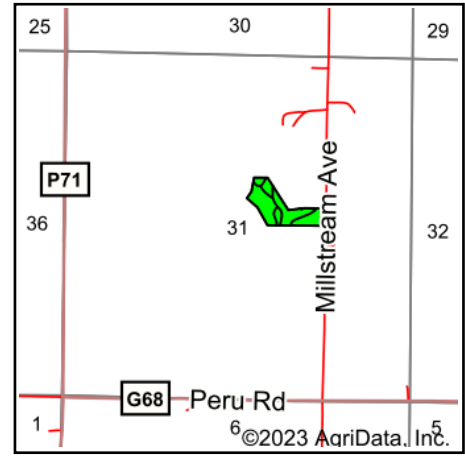


# Soils Map



Soils data provided by USDA and NRCS.



State: **Iowa**  
 County: **Madison**  
 Location: **31-75N-27W**  
 Township: **Scott**  
 Acres: **9.8**  
 Date: **6/13/2023**



Maps Provided By:



Area Symbol: IA121, Soil Area Version: 26

Code	Soil Description	Acres	Percent of field	CSR2 Legend	Non-Irr Class *c	CSR2**	*n NCCPI Overall	
822D3	Lamoni clay loam, 9 to 14 percent slopes, severely eroded	3.45	35.2%		Vle	11	53	
370C2	Sharpsburg silty clay loam, 5 to 9 percent slopes, eroded	2.60	26.5%		IIle	80	82	
370B	Sharpsburg silty clay loam, 2 to 5 percent slopes	2.02	20.6%		Ile	91	92	
824D2	Shelby-Lamoni complex, 9 to 14 percent slopes, eroded	0.78	8.0%		IVe	28	61	
69C2	Clearfield silty clay loam, dissected till plain, 5 to 9 percent slopes, eroded	0.55	5.6%		IIIw	56	66	
11B	Colo, occasionally flooded-Ely silty clay loams, dissected till plain, 2 to 5 percent slopes	0.40	4.1%		IIw	80	87	
<b>Weighted Average</b>						<b>3.89</b>	<b>52.5</b>	<b>*n 71.5</b>

\*\*IA has updated the CSR values for each county to CSR2.

\*n: The aggregation method is "Weighted Average using all components"

\*c: Using Capabilities Class Dominant Condition Aggregation Method

Soils data provided by USDA and NRCS.