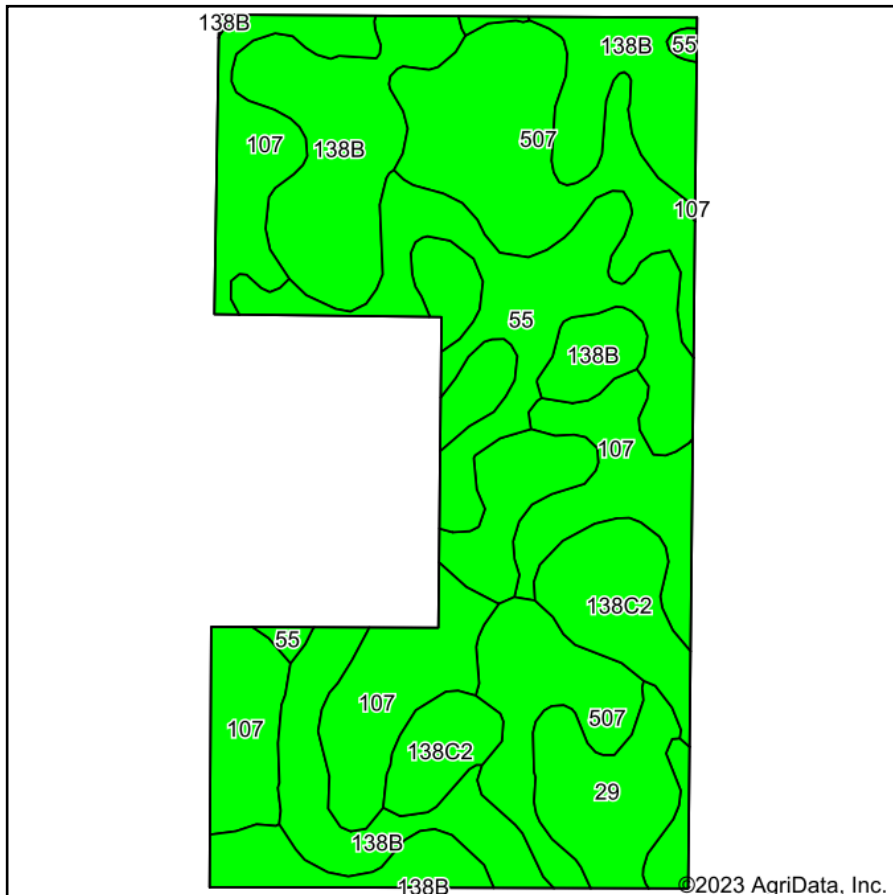
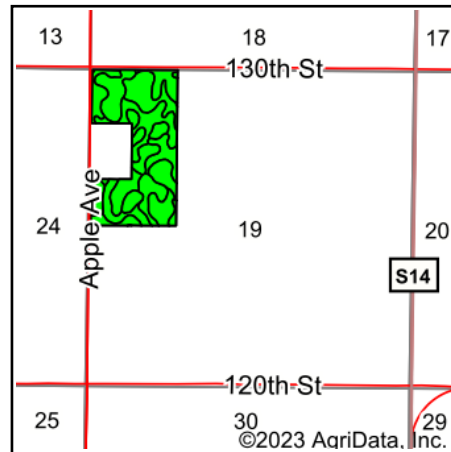


Soils Map



Soils data provided by USDA and NRCS.



State: **Iowa**
 County: **Cerro Gordo**
 Location: **19-94N-22W**
 Township: **Grimes**
 Acres: **70.26**
 Date: **6/7/2023**



Maps Provided By:



Area Symbol: IA033, Soil Area Version: 26

Code	Soil Description	Acres	Percent of field	CSR2 Legend	Non-Irr Class *c	*i Corn Bu	*j Soybeans Bu	CSR2**	CS R	*n NCCPI Overall	
138B	Clarion loam, 2 to 6 percent slopes	21.12	30.1%		Ile	225.6	65.4	89	80	83	
107	Webster clay loam, 0 to 2 percent slopes	15.70	22.3%		Ilw	224.0	65.0	86	83	82	
507	Canisteo clay loam, 0 to 2 percent slopes	14.97	21.3%		Ilw	224.0	65.0	84	78	81	
55	Nicollet clay loam, 1 to 3 percent slopes	8.97	12.8%		Iw	233.6	67.7	89	88	81	
138C2	Clarion loam, 6 to 10 percent slopes, moderately eroded	5.49	7.8%		IIIe	204.8	59.4	83	63	70	
29	Clarion-Nicollet loams, 1 to 3 percent slopes	4.01	5.7%		Iw	228.8	66.4	89	85	83	
Weighted Average						1.89	224.5	65.1	86.8	80.2	*n 81.1

**IA has updated the CSR values for each county to CSR2.

*i Yield data provided by the ISPAID Database version 8.1.1 developed by IA State University.

*n: The aggregation method is "Weighted Average using all components"

*c: Using Capabilities Class Dominant Condition Aggregation Method

Soils data provided by USDA and NRCS.