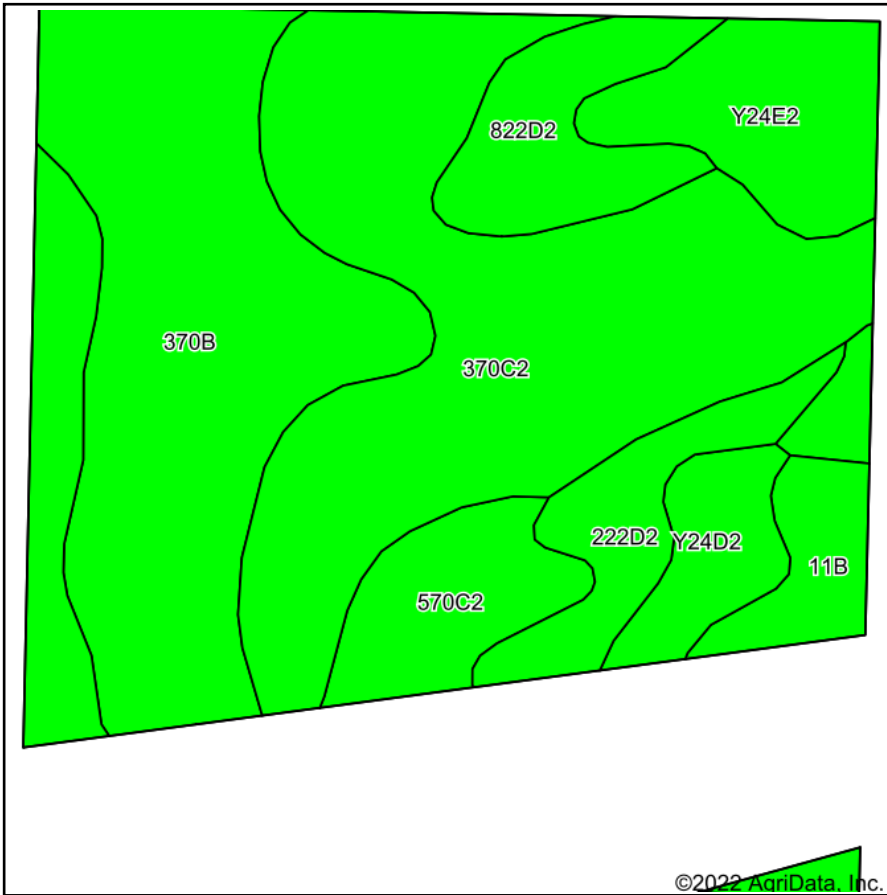
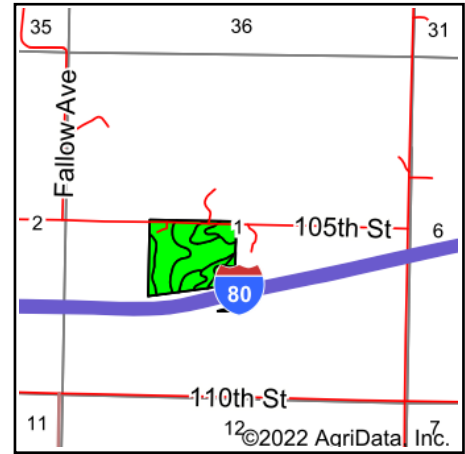


Soils Map



Soils data provided by USDA and NRCS.



State: **Iowa**
 County: **Adair**
 Location: **1-77N-33W**
 Township: **Summit**
 Acres: **32.27**
 Date: **12/5/2022**



Maps Provided By



© AgriData, Inc. 2021

www.AgriDataInc.com



Area Symbol: IA001, Soil Area Version: 31

Code	Soil Description	Acres	Percent of field	CSR2 Legend	Non-Irr Class *c	*i Corn Bu	*i Soybeans Bu	CSR2**	CS R	*n NCCPI Overall	
370C2	Sharpsburg silty clay loam, 5 to 9 percent slopes, eroded	12.50	38.7%		IIle	204.8	59.4	80	67	82	
370B	Sharpsburg silty clay loam, 2 to 5 percent slopes	8.77	27.2%		Ile	225.6	65.4	91	87	92	
Y24E2	Shelby clay loam, dissected till plain, 14 to 18 percent slopes, eroded	2.78	8.6%		IVe	0.0	0.0	35		67	
822D2	Lamoni silty clay loam, 9 to 14 percent slopes, eroded	2.01	6.2%		IVe	100.8	29.2	10	15	59	
570C2	Nira silty clay loam, dissected till plain, 5 to 9 percent slopes, eroded	1.87	5.8%		IIle	169.6	49.2	81	64	84	
222D2	Clarinda silty clay loam, dissected till plain, 9 to 14 percent slopes, eroded	1.77	5.5%		IVe	112.0	32.5	17	10	54	
Y24D2	Shelby clay loam, dissected till plain, 9 to 14 percent slopes, eroded	1.48	4.6%		IIle	0.0	0.0	49		73	
11B	Colo, occasionally flooded-Ely silty clay loams, dissected till plain, 2 to 5 percent slopes	1.09	3.4%		IIw	204.8	59.4	80	69	87	
Weighted Average						2.90	169.8	49.2	69.9	*-	*n 80.3

**IA has updated the CSR values for each county to CSR2.

*- CSR weighted average cannot be calculated on the current soils data, use prior data version for csr values.

*i Yield data provided by the ISPAID Database version 8.1.1 developed by IA State University.

*n: The aggregation method is "Weighted Average using all components"

*c: Using Capabilities Class Dominant Condition Aggregation Method

Soils data provided by USDA and NRCS.