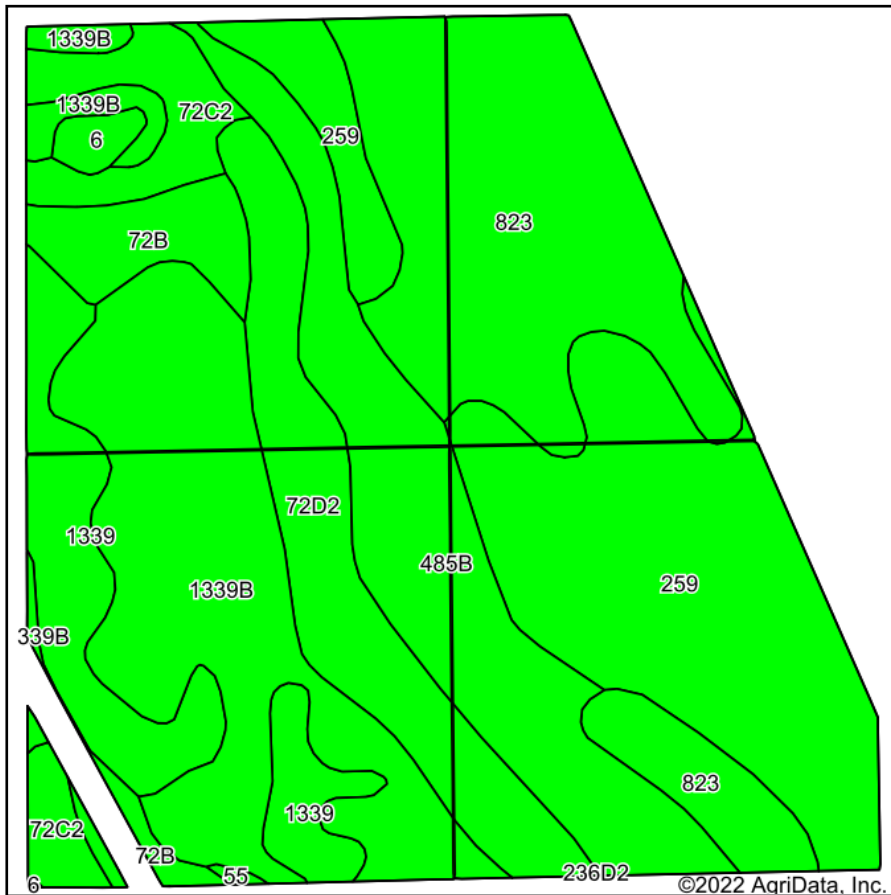
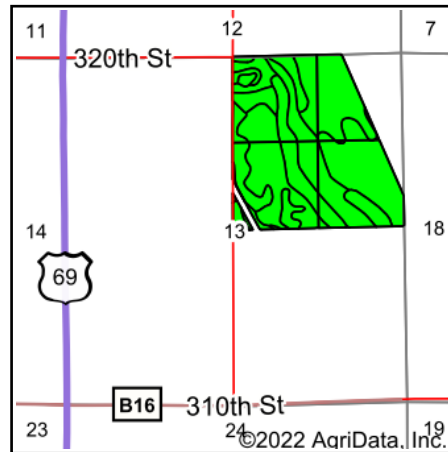


Soils Map



Soils data provided by USDA and NRCS.



State: **Iowa**
 County: **Hancock**
 Location: **13-97N-24W**
 Township: **Madison**
 Acres: **134.35**
 Date: **9/20/2022**



Maps Provided By:



Area Symbol: IA081, Soil Area Version: 32

Code	Soil Description	Acres	Percent of field	CSR2 Legend	Non-Irr Class *c	*i Corn Bu	*i Soybeans Bu	CSR2**	CSR	*n NCCPI Overall
259	Biscay clay loam, 0 to 2 percent slopes	29.05	21.6%		IIw	80.0	23.2	52	75	69
823	Ridgeport sandy loam, 0 to 2 percent slopes	27.01	20.1%		IIIs	80.0	23.2	56	37	56
1339B	Truman silt loam, 2 to 6 percent slopes	25.53	19.0%		IIe	232.0	67.3	95	82	91
485B	Spillville loam, 2 to 5 percent slopes	17.31	12.9%		IIe	200.0	58.0	88	85	89
72D2	Estherville loam, 9 to 14 percent slopes, moderately eroded	12.69	9.4%		IVe	88.0	25.5	8	9	47
1339	Truman silt loam, 0 to 2 percent slopes	10.54	7.8%		Iw	240.0	69.6	99	87	91
72C2	Estherville loam, 5 to 9 percent slopes, moderately eroded	6.07	4.5%		IVs	80.0	23.2	13	19	49
72B	Estherville sandy loam, 2 to 6 percent slopes	5.09	3.8%		IIIs	80.0	23.2	27	33	52
6	Okoboji silty clay loam, 0 to 1 percent slopes	0.92	0.7%		IIIw	185.6	53.8	59	57	76
55	Nicollet clay loam, 1 to 3 percent slopes	0.14	0.1%		Iw	233.6	67.7	89	88	82
Weighted Average					2.45	138.5	40.2	62.5	60.5	*n 71.3

**IA has updated the CSR values for each county to CSR2.

*i Yield data provided by the ISPAID Database version 8.1.1 developed by IA State University.

*n: The aggregation method is "Weighted Average using all components"

*c: Using Capabilities Class Dominant Condition Aggregation Method

Soils data provided by USDA and NRCS.