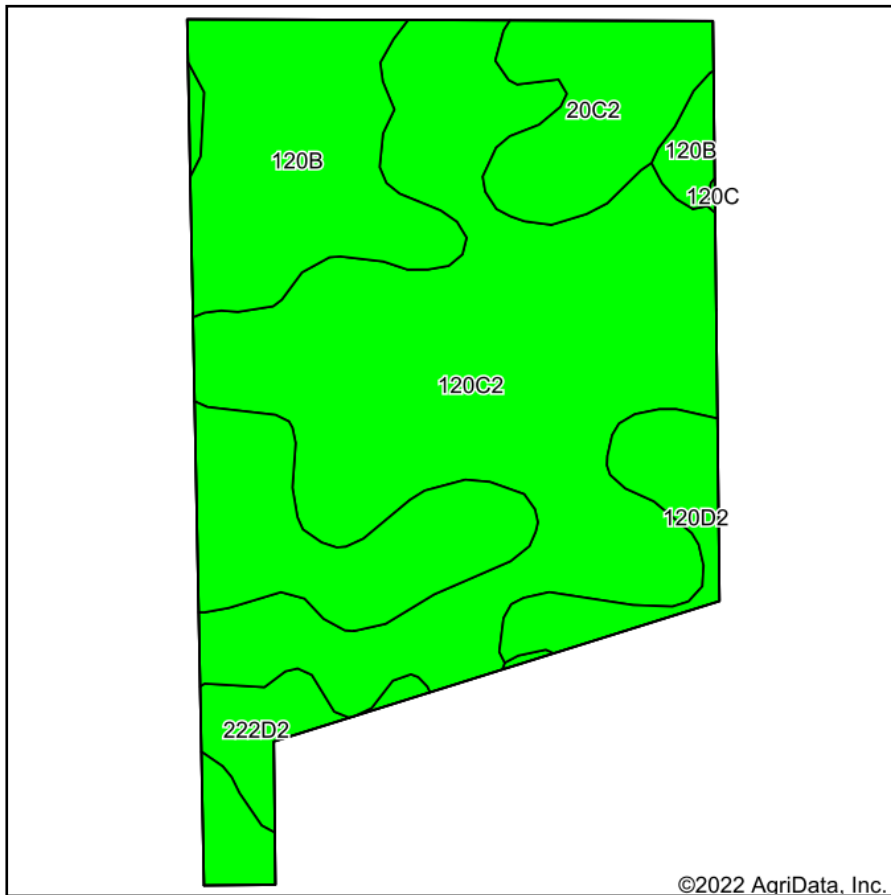
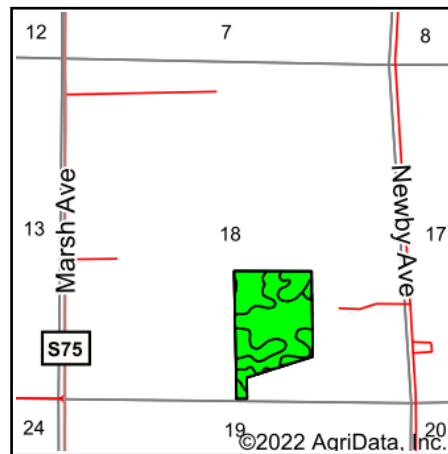


Soils Map



Soils data provided by USDA and NRCS.



State: **Iowa**
 County: **Marshall**
 Location: **18-82N-18W**
 Township: **Jefferson**
 Acres: **42.45**
 Date: **8/29/2022**



Maps Provided By:



Area Symbol: IA127, Soil Area Version: 26

| Code | Soil Description | Acres | Percent of field | CSR2 Legend | Non-Irr Class *c | *i Corn Bu | *i Soybeans Bu | CSR2** | CSR | *n NCCPI Overall | |
|-------------------------|---|-------|------------------|-------------|------------------|-------------|----------------|-------------|-------------|------------------|----------------|
| 120C2 | Tama silty clay loam, 5 to 9 percent slopes, eroded | 22.90 | 53.9% | | IIIe | 211.2 | 61.2 | 87 | 78 | 91 | |
| 120B | Tama silty clay loam, 2 to 5 percent slopes | 12.06 | 28.4% | | Ile | 232.0 | 67.3 | 95 | 95 | 97 | |
| 20C2 | Killduff silty clay loam, 5 to 9 percent slopes, eroded | 3.78 | 8.9% | | IIIe | 206.4 | 59.9 | 81 | 73 | 90 | |
| 120D2 | Tama silty clay loam, 9 to 14 percent slopes, eroded | 2.24 | 5.3% | | IIIe | 177.6 | 51.5 | 62 | 68 | 86 | |
| 222D2 | Clarinda silty clay loam, 9 to 14 percent slopes, moderately eroded | 1.47 | 3.5% | | IVe | 112.0 | 32.5 | 19 | 10 | 65 | |
| Weighted Average | | | | | | 2.75 | 211.5 | 61.3 | 85.1 | 79.5 | *n 91.5 |

**IA has updated the CSR values for each county to CSR2.

*i Yield data provided by the ISPAID Database version 8.1.1 developed by IA State University.

*n: The aggregation method is "Weighted Average using all components"

*c: Using Capabilities Class Dominant Condition Aggregation Method

Soils data provided by USDA and NRCS.