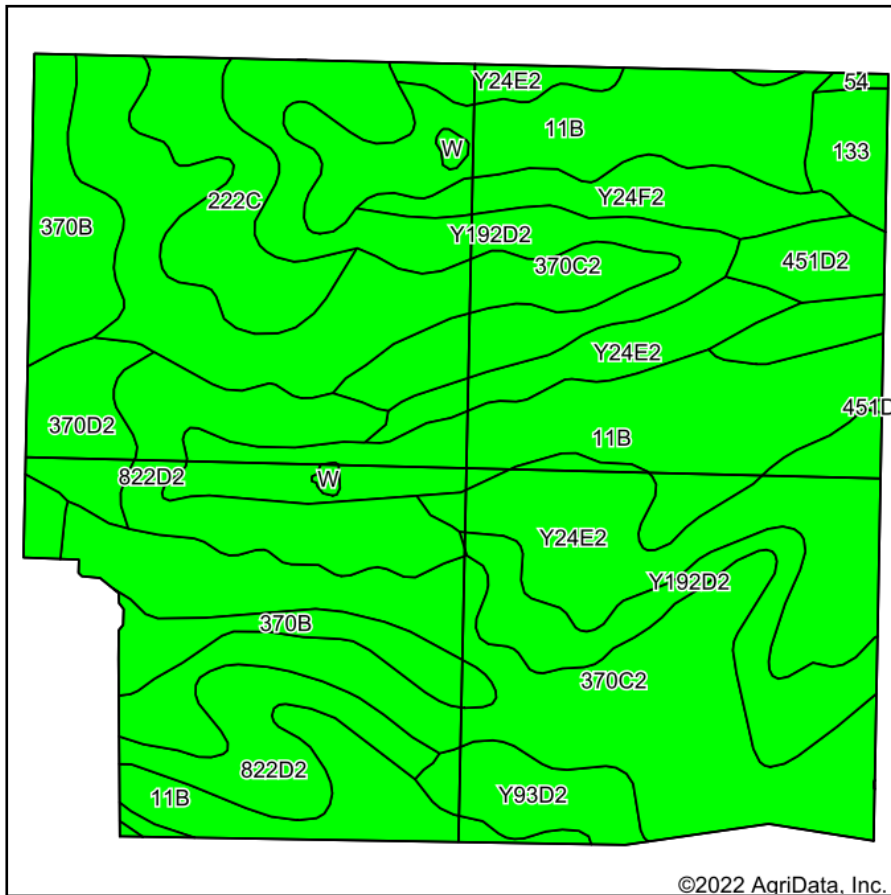
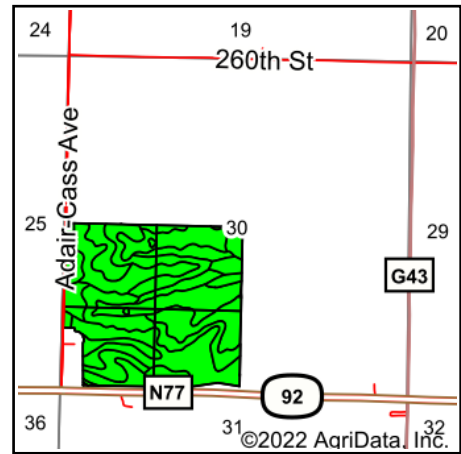


Soils Map



©2022 AgriData, Inc.

Soils data provided by USDA and NRCS.



State: **Iowa**
 County: **Adair**
 Location: **30-75N-33W**
 Township: **Jackson**
 Acres: **154.18**
 Date: **7/25/2022**



Maps Provided By:



Area Symbol: IA001, Soil Area Version: 30

Code	Soil Description	Acres	Percent of field	CSR2 Legend	Non-Irr Class *c	*i Corn Bu	*j Soybeans Bu	CSR2**	CSR	*n NCCPI Overall
370C2	Sharpsburg silty clay loam, 5 to 9 percent slopes, eroded	37.46	24.3%		IIle	204.8	59.4	80	67	84
11B	Colo, occasionally flooded-Ely silty clay loams, dissected till plain, 2 to 5 percent slopes	30.22	19.6%		IIlw	204.8	59.4	80	69	88
Y192D2	Adair clay loam, dissected till plain, 9 to 14 percent slopes, eroded	19.27	12.5%		IVe	0.0	0.0	16		64
Y24E2	Shelby clay loam, dissected till plain, 14 to 18 percent slopes, eroded	18.37	11.9%		IVe	0.0	0.0	35		70
822D2	Lamoni silty clay loam, 9 to 14 percent slopes, eroded	14.16	9.2%		IVe	100.8	29.2	10	15	60
370B	Sharpsburg silty clay loam, 2 to 5 percent slopes	8.91	5.8%		IIe	225.6	65.4	91	87	93
222C	Clarinda silty clay loam, 5 to 9 percent slopes	6.29	4.1%		IVw	145.6	42.2	36	30	65
Y24F2	Shelby clay loam, dissected till plain, 18 to 25 percent slopes, eroded	4.82	3.1%		VIe	0.0	0.0	20		55
133	Colo silty clay loam, deep loess, 0 to 2 percent slopes, occasionally flooded	3.97	2.6%		IIlw	204.8	59.4	78	80	81
370D2	Sharpsburg silty clay loam, 9 to 14 percent slopes, eroded	3.84	2.5%		IIle	176.0	51.0	54	57	80
Y93D2	Shelby-Adair clay loams, dissected till plain, 9 to 14 percent slopes, eroded	3.72	2.4%		IIle	0.0	0.0	35		69
451D2	Caleb loam, 9 to 14 percent slopes, moderately eroded	2.52	1.6%		IVe	163.2	47.3	52	33	85
W	Water	0.38	0.2%			0.0	0.0	0	0	
54	Zook silty clay loam, 0 to 2 percent slopes, occasionally flooded	0.25	0.2%		IIlw	177.6	51.5	67	70	63
Weighted Average					*-	130.7	37.9	54.7	*-	*n 76.5

**IA has updated the CSR values for each county to CSR2.

*- CSR weighted average cannot be calculated on the current soils data, use prior data version for csr values.

*i Yield data provided by the ISPAID Database version 8.1.1 developed by IA State University.

*n: The aggregation method is "Weighted Average using all components"

*c: Using Capabilities Class Dominant Condition Aggregation Method

*- Non Irr Class weighted average cannot be calculated on the current soils data due to missing data.

Soils data provided by USDA and NRCS.