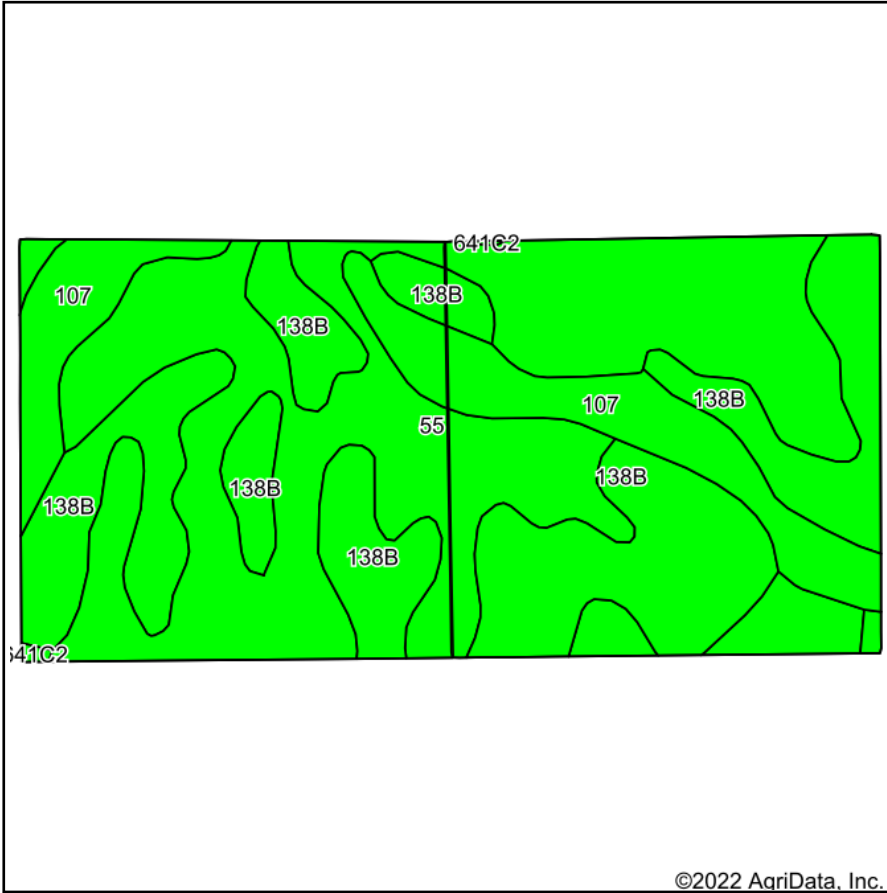
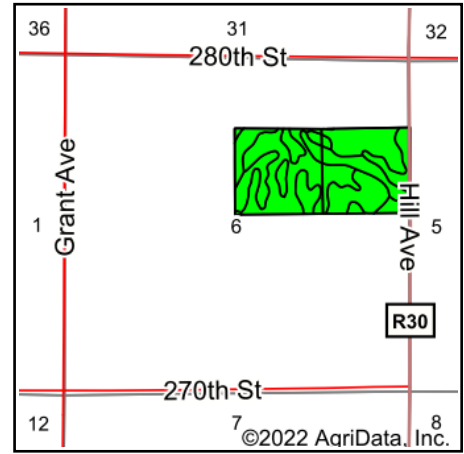


# Soils Map



©2022 AgriData, Inc.

Soils data provided by USDA and NRCS.



State: **Iowa**  
 County: **Hancock**  
 Location: **6-96N-25W**  
 Township: **Britt**  
 Acres: **78.72**  
 Date: **4/13/2022**



Maps Provided By:



Area Symbol: IA081, Soil Area Version: 32

Code	Soil Description	Acres	Percent of field	CSR2 Legend	Non-Irr Class *c	*i Corn Bu	*i Soybeans Bu	CSR2**	CSR	*n NCCPI Overall	
55	Nicollet clay loam, 1 to 3 percent slopes	38.41	48.8%		lw	233.6	67.7	89	88	82	
138B	Clarion loam, 2 to 6 percent slopes	29.00	36.8%		lle	225.6	65.4	89	80	84	
107	Webster clay loam, 0 to 2 percent slopes	11.19	14.2%		llw	224.0	65.0	86	83	83	
641C2	Clarion-Sunburg complex, 5 to 9 percent slopes, moderately eroded	0.12	0.2%		llle	160.0	46.4	71	54	68	
<b>Weighted Average</b>						<b>1.51</b>	<b>229.2</b>	<b>66.4</b>	<b>88.5</b>	<b>84.3</b>	<b>*n 82.9</b>

\*\*IA has updated the CSR values for each county to CSR2.

\*i Yield data provided by the ISPAID Database version 8.1.1 developed by IA State University.

\*n: The aggregation method is "Weighted Average using all components"

\*c: Using Capabilities Class Dominant Condition Aggregation Method

Soils data provided by USDA and NRCS.